

# PURE PERFORMANCE



*A newly designed, professional,  
all-terrain metal detector from Garrett!*

## AT<sup>TM</sup> PRO

Part # 1140460

**AT Pro International version also available outside the United States.  
Please consult your dealer for more details.**

## AT<sup>TM</sup> PRO



- Standard and professional audio modes
- Fast recovery speed
- High-resolution iron discrimination
- Iron Audio™: Advanced iron identification
- All terrain versatility:  
waterproof to 10 feet
- Digital Target ID
- Ground balance
- 15 kHz frequency for improved detection  
of small targets, gold, jewelry
- Exclusive DD coil design for mineralized  
soil and superior target separation
- Headphones included

# Conquer the field with confidence



# AT<sup>TM</sup> PRO

Part # 1140460

***AT Pro*** is Garrett's all-new, all-terrain, all-treasure, deep-seeking, professional treasure hunter's detector!

### **AT Pro's All Terrain Capabilities:**

- ✓ Relic Hunting
- ✓ Coin Shooting
- ✓ Prospecting
- ✓ Cache Hunting
- ✓ Jewelry Hunting
- ✓ Shallow Water Searching
- ✓ Beach Hunting
- ✓ Competition Events
- ✓ Mineralized Soil Areas
- ✓ Advanced Target Separation
- ✓ Fast Recovery Speed
- ✓ Professional Audio Mode for Additional Target Info



## **All-Terrain Versatility**

The *AT Pro* is engineered with a waterproof housing and connectors to protect in dusty, muddy, wet and humid environments. The *AT Pro* can be immersed in water to a 10-foot depth (maximum) to search in and along shorelines, rivers, piers, docks or swimming holes.

**NOTE:** Waterproof headphones (optional item shown in photo to right) must be used if the headphones are immersed in water. Standard headphones provided with *AT Pro* can not be submerged.





# Key Features and Specifications

The new Garrett AT Pro is unlike any previous Garrett metal detector

Part # 1140460

### Standard and Pro Search Modes

Standard Mode provides conventional target response for easy operation. Experienced users can select Pro Mode to obtain more advanced audible Target ID to judge target size, shape, and depth.

### Fast Recovery Speed on Targets

Pro Mode Audio offers greater ability to pick out good targets amongst trash and fast recovery speed on multiple targets.



**PRO MODE AUDIO™:** Proportional Audio and Tone Roll Audio™ features allow the user to hear characteristics of a target as in a True All-Metal Mode.



**IRON AUDIO™:** Allows user to hear discriminated iron (normally silenced) and to alter the detector's mid-tone signal's range in order to avoid digging undesired ferrous targets.



### HIGH-RESOLUTION IRON DISCRIMINATION:

Use touchpads to set iron discrimination in one of 40 levels for precise ability to separate good targets from trash.



### DIGITAL TARGET ID:

This 0 to 99 Target ID scale offers increased ability to distinguish one target's conductivity from another.



### MANUAL GROUND BALANCE:

Allows user to manually adjust the detector's ground balance to reduce the detrimental effects of ground mineralization.



### FAST TRACK™ GROUND BALANCE:

Automatic feature that allows user to quickly ground balance the detector in mineralized soil conditions.



**ALL TERRAIN VERSATILITY:** Waterproof housing and connectors protect against dusty, muddy, wet and humid environments. The AT Pro International can be immersed in water to a 10-foot depth (maximum) to search in and along shorelines, rivers, piers, docks or swimming holes.



**ELECTRONIC PINPOINTING:** This All-Metal Mode function is used to precisely locate a detected target's location in the ground.

### 15 kHz High Frequency

Offers improved detection of small targets, gold nuggets, jewelry.



### DELUXE VOLUME-CONTROL HEADPHONES ARE INCLUDED!

Garrett Master Sound headphones with dual volume controls are included with each AT Pro International.

NOTE: Waterproof headphones (optional item shown at right) must be used if the headphones are immersed in water. Standard headphones provided with AT Pro can not be submerged.



Target ID Cursor Segments	20 (12 for notch discrim.)
Iron Discrimination Segments	40 (select 0 to 39)
Accept/Reject Notch Discrimination	YES
Search Modes	6 (3 Standard, 3 Pro modes)
Sensitivity/Depth Adjustments	8
Electronic Pinpointing	YES
Frequency	15 kHz
Audio Tone ID Levels	3
Standard Searchcoil	8.5" x 11" DD PROformance
Length (Adjustable)	42" to 51" (1.06m - 1.29m)
Total Weight	3.03 lbs. (1.4 kgs.)
Batteries	4 AA (included)
Warranty	2 Year, Limited Parts/Labor



Part # 1140460

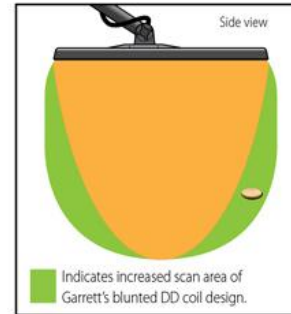
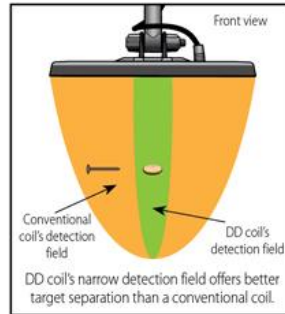
# Key Features and Specifications

The new Garrett AT Pro is unlike any previous Garrett metal detector

## POWERFUL NEW GARRETT DOUBLE-D SEARCHCOIL OFFERS SEARCH ADVANTAGES



- Exceptional pinpointing ability
- Excellent ground visibility through the coil
- 8.5 x 11" DD **PROformance** searchcoil provides greater detection depth and performance by significantly reducing the negative effects of heavily mineralized ground and saltwater interference.



- **Garrett exclusive:** blunted tip and tail design further extends coil's total scan area.



### High-Res Iron Discrimination™

Use the (+) or (-) IRON DISC touchpads to precisely set iron discrimination to one of 40 levels for an unequalled ability to detect good targets amongst iron trash.



Digital Target ID (0 to 99 scale)

The AT Pro's Digital Target ID system provides a specific target value to help identify buried targets more precisely. Targets are identified on the LCD screen by number, with items near 1 being the most ferrous. The most conductive targets (such as thick silver) register closer to 99.



Digital Target ID number corresponds with the Upper Scale conductivity pixel.



Mississippi relic hunter Rob S. digs Civil War bullets while field testing the AT Pro. At upper left is a partially carved Confederate Enfield minié ball he recovered.





Part # 1140460

# Key Features and Specifications

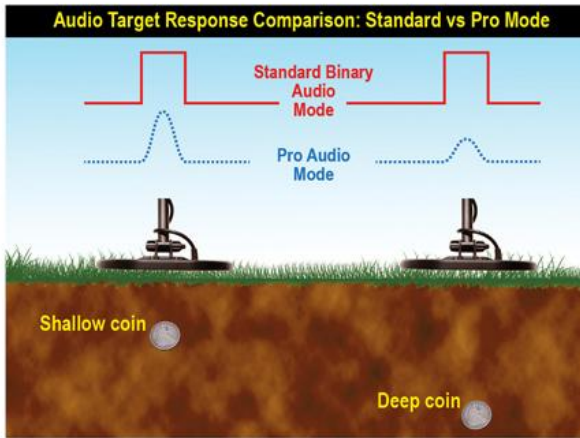
The new Garrett AT Pro is unlike any previous Garrett metal detector

## Pro Audio Mode offers more target info and fast recovery on multiple targets!

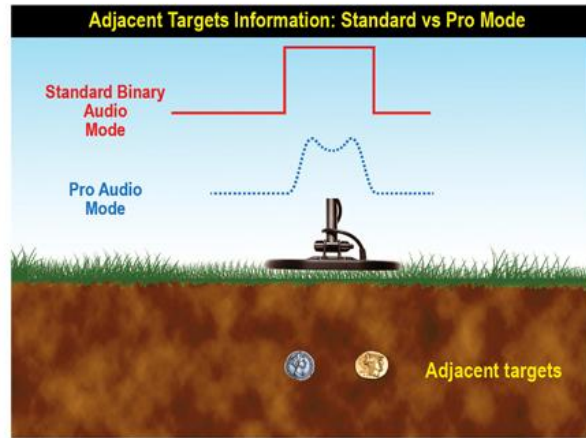
### Standard and Pro Audio Modes

In Standard binary audio mode, the AT Pro provides a full-strength beep regardless of a target's amplitude. Many detectorists prefer this consistent binary (either on or off) target response. For those who want to hear more target information—similar to what is experienced with a True All-Metal detector—the AT Pro also offers a proportional (Pro) audio mode.

Proportional audio response allows the user to hear subtle changes in a target's response. This allows the user to better judge a target's size, shape and depth and has the additional benefit of a much faster recovery time when detecting adjacent targets.



Notice the differences in binary audio versus proportional audio in the two target scenarios above. The detector with binary audio gives a solid, consistent beep for both the shallow and the deep coin. In contrast, the AT Pro's proportional audio provides a stronger signal for the shallow coin and a softer signal for the deeper coin. The actual profile, or signature, of the target's response is heard, thereby providing more information.



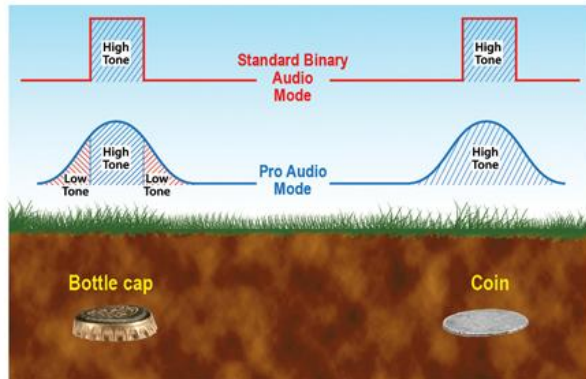
These two adjacent coins would produce one strong signal from a binary audio detector. With proportional audio, a rise and fall of audio response allows the user to interpret the multiple targets.



### Tone Roll Audio™

This feature provides the user with more audible target information to help identify targets, particularly iron objects. Metal detectors with binary audio produce a single target sound based upon the target's strongest signal. Tone Roll Audio provides a variance of target tones as the searchcoil approaches, passes above and departs from a target. These varying phases, or tones of audio, provide better overall target information.

For many detectors with binary audio, bottle caps, steel washers, etc. sound like good targets, producing a high tone response. This is because the bottle cap's shape and flat surface resembles a coin which tricks the detector. With Garrett's Tone Roll Audio, however, the bottle cap will produce a very distinctive response with multiple tones. As shown, the bottle cap will produce a distinctive Low-High-Low response as compared to the coin's High-only response.



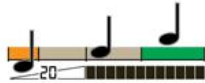


Part # 1140460

# Key Features and Specifications

The new Garrett AT Pro is unlike any previous Garrett metal detector

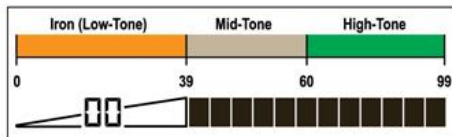
## Iron Audio™



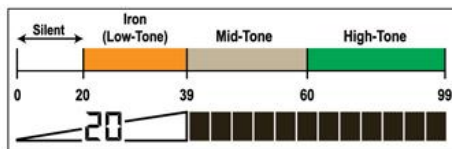
Scattered iron objects in the ground can mask good targets and even create "ghost signals" that appear to be a good target. Garrett's selectable Iron Audio feature allows the user to hear discriminated iron (normally silenced) in order to know the whole picture and avoid being tricked into digging an undesired target.

Iron Audio also allows the user to adjust the mid-tone's range to include all targets above the point of discrimination. The user is effectively adjusting the cut-off between Low-tone discriminated trash targets and mid-tone targets. This Garrett feature works in both Standard and Pro Modes on the AT Pro. (See illustrations below.)

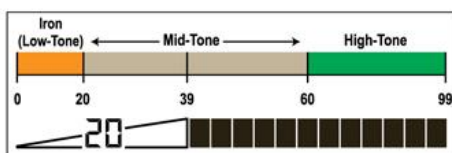
Normal division of low, mid and high tones on AT Pro. Iron Audio is set to OFF.



With the iron discrimination set to 20, all targets below 20 are silent with the Iron Audio OFF.



With the Iron Audio feature ON, the targets below 20 are now heard as a low tone and the mid-tone is expanded down to 20.



## Gallery of early finds made by AT Pro field testers



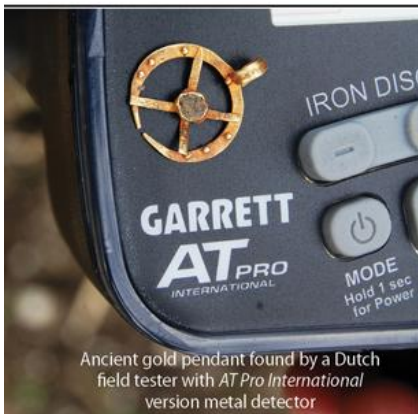
(Above) Roman coins, musket balls and buttons found in the UK during September 2010 testing



Civil War finds (above) of Brian P. (below, left) in Tennessee



Nikki W. (above, right) recovered a Civil War rifle ball and five partial buck and ball loads



Ancient gold pendant found by a Dutch field tester with AT Pro International version metal detector



Belgian field tester with early artifacts and coin finds





Part # 1140460

## Suggested Accessories



### Accessory:

- A. 6.5" x 9" *PROformance* concentric
- B. 4.5" *Super Sniper* searchcoil
- C. 8.5" x 11" DD Coil Cover
- D. Submersible Headphones
- E. Garrett Detectorist's Backpack
- F. *ACE* 6.5" x 9" Coil Cover
- G. Garrett *PRO-POINTER* Pinpointer
- H. Garrett Retriever Digging Tool

### Product

### Number:

### MSRP:

2222600	\$119.95
2222500	\$109.95
1606600	\$14.95
2202100	\$99.95
1651800	\$59.95
1605700	\$14.95
1166000	\$149.95
1625600	\$29.95

